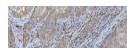

Product Datasheet

**HLA-DR/HLA-DRA Antibody (monoclonal, 8I10H1)
(orb1152389)**

Description

HLA-DR/HLA-DRA Antibody (monoclonal, 8110H1)


Species/Host

Mouse

Reactivity

Human

Conjugation

Unconjugated

Tested Applications

FC, IHC, WB

Immunogen

E.coli-derived human HLA-DR/HLA-DRA recombinant protein (Position: I26-L254).

Form/Appearance

Lyophilized

Concentration

Adding 0.2 ml of distilled water will yield a concentration of 500 µg/ml.

Storage

Maintain refrigerated at 2-8°C for up to 2 weeks. For long term storage store at -20°C in small aliquots to prevent freeze-thaw cycles.

Note

For research use only

Application notes

Tested Species: In-house tested species with positive results. Other applications have not been tested. Optimal dilutions should be determined by end users. Adding 0.2 ml of distilled water will yield a concentration of 500 µg/ml.

Isotype

Mouse IgG1

Clonality

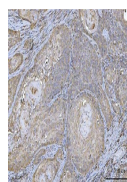
Monoclonal

MW

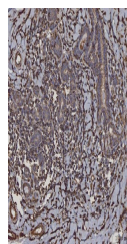
35-37 kDa

Uniprot ID
P01903
Expiration Date

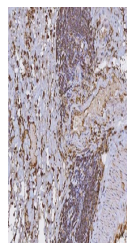
12 months from date of receipt.



IHC analysis of HLA-DRA using anti-HLA-D...



IHC analysis of HLA-DRA using anti-HLA-D...



IHC analysis of HLA-DRA using anti-HLA-D...