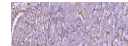

Product Datasheet

**HLA-DR/HLA-DRA Antibody (monoclonal, 5B13F7)
(orb1152388)**

Description

HLA-DR/HLA-DRA Antibody (monoclonal,


Species/Host

Mouse

Reactivity

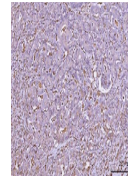
Human

Conjugation

Unconjugated

Tested Applications

FC, IHC, WB



IHC analysis of HLA-DRA using anti-HLA-D...

Immunogen

E.coli-derived human HLA-DR/HLA-DRA recombinant protein (Position: I26-L254).

Form/Appearance

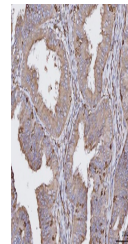
Lyophilized

Concentration

Adding 0.2 ml of distilled water will yield a concentration of 500 µg/ml.

Storage

Maintain refrigerated at 2-8°C for up to 2 weeks. For long term storage store at -20°C in small aliquots to prevent freeze-thaw cycles.



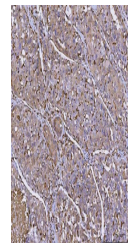
IHC analysis of HLA-DRA using anti-HLA-D...

Note

For research use only

Application notes

Tested Species: In-house tested species with positive results. Other applications have not been tested. Optimal dilutions should be determined by end users. Adding 0.2 ml of distilled water will yield a concentration of 500 µg/ml.



IHC analysis of HLA-DRA using anti-HLA-D...

Isotype

Mouse IgG2b

Clonality

Monoclonal

MW

35-37 kDa

Uniprot ID
P01903
Expiration Date

12 months from date of receipt.