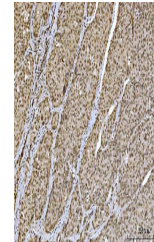


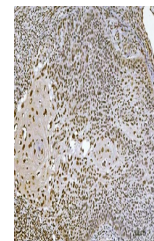
Product Datasheet

Ataxin 1 Antibody (monoclonal, 2B13G8) (orb1152387)

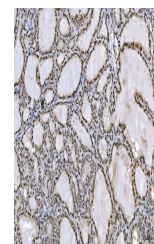
Description	Ataxin 1 Antibody (monoclonal, 2B13G8)
Species/Host	Mouse
Reactivity	Human, Mouse, Rat
Conjugation	Unconjugated
Tested Applications	FC, IHC, WB
Immunogen	A synthetic peptide corresponding to a sequence at the C-terminus of human Ataxin 1(778-808aa ESRKLEKSEDEPPLTLPKPSLIPQEVKICIE), different from the related and rat sequences by one amino acid.
Form/Appearance	Lyophilized
Concentration	Adding 0.2 ml of distilled water will yield a concentration of 500 µg/ml.
Storage	Maintain refrigerated at 2-8°C for up to 2 weeks. For long term storage store at -20°C in small aliquots to prevent freeze-thaw cycles.
Note	For research use only
Application notes	Tested Species: In-house tested species with positive results. Other applications have not been tested. Optimal dilutions should be determined by end users. Adding 0.2 ml of distilled water will yield a concentration of 500 µg/ml.
Isotype	Mouse IgG2b
Clonality	Monoclonal
MW	105 kDa
Uniprot ID	P54253
Expiration Date	12 months from date of receipt.



IHC analysis of Ataxin 1 using anti-Atax...



IHC analysis of Ataxin 1 using anti-Atax...



IHC analysis of Ataxin 1 using anti-Atax...