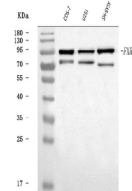


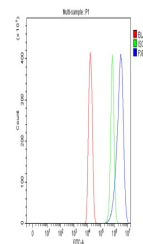
Product Datasheet

FXR2 Antibody (orb1152345)

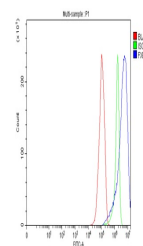
Description	FXR2 Antibody
Species/Host	Rabbit
Reactivity	Human, Monkey, Mouse
Conjugation	Unconjugated
Tested Applications	ELISA, FC, WB
Immunogen	E.coli-derived human FXR2 recombinant protein (Position: N153-K651).
Form/Appearance	Lyophilized
Concentration	Adding 0.2 ml of distilled water will yield a concentration of 500 µg/ml.
Storage	Maintain refrigerated at 2-8°C for up to 2 weeks. For long term storage store at -20°C in small aliquots to prevent freeze-thaw cycles.
Note	For research use only
Application notes	Western blot, 0.25-0.5 µg/ml, Human, Monkey Flow Cytometry (Fixed), 1-3 µg/1x10 ⁶ cells, Human, Mouse Direct ELISA, 0.1-0.5 µg/ml, Human. Adding 0.2 ml of distilled water will yield a concentration of 500 µg/ml
Isotype	Rabbit IgG
Clonality	Polyclonal
MW	93 kDa
Uniprot ID	P51116
Expiration Date	12 months from date of receipt.



Western blot analysis of FXR2 using anti...



Flow Cytometry analysis of HEPA1-6 cells...



Flow Cytometry analysis of RT4 cells usi...