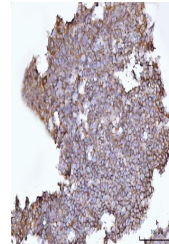


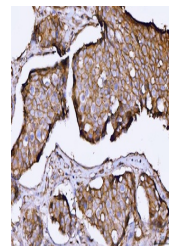
Product Datasheet

SNAP23 Antibody (orb1152313)

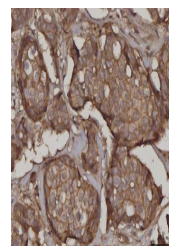
Description	SNAP23 Antibody
Species/Host	Rabbit
Reactivity	Human
Conjugation	Unconjugated
Tested Applications	ELISA, FC, ICC, IF, IHC, WB
Immunogen	E.coli-derived human SNAP23 recombinant protein (Position: M1-S211).
Form/Appearance	Lyophilized
Concentration	Adding 0.2 ml of distilled water will yield a concentration of 500 µg/ml.
Storage	Maintain refrigerated at 2-8°C for up to 2 weeks. For long term storage store at -20°C in small aliquots to prevent freeze-thaw cycles.
Note	For research use only
Application notes	Western blot, 0.25-0.5 µg/ml, Human Immunohistochemistry(Paraffin-embedded Section), 2-5 µg/ml, Human Immunocytochemistry/Immunofluorescence, 5 µg/ml, Human Flow Cytometry (Fixed), 1-3 µg/1x10 ⁶ cells, Human Direct ELISA, 0.1-0.5 µg/ml, Human. Adding 0.2 ml of distilled water will yield a concentration of 500 µg/ml
Isotype	Rabbit IgG
Clonality	Polyclonal
MW	25 kDa
Uniprot ID	O00161
Sensitivity	10pg/ml
Expiration Date	12 months from date of receipt.



IHC analysis of SNAP23 using anti-SNAP23...



IHC analysis of SNAP23 using anti-SNAP23...



IHC analysis of SNAP23 using anti-SNAP23...