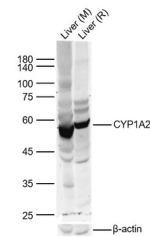


Product Datasheet

CYP1A2 antibody (orb1152148)

Description	CYP1A2 antibody
Species/Host	Rabbit
Reactivity	Mouse, Rat
Conjugation	Unconjugated
Tested Applications	WB
Immunogen	KLH conjugated synthetic peptide derived from mouse CYP1A2 (451-513/513 aa)
Target	CYP1A2
Preservatives	0.01M TBS(pH7.4) with 1% rAlbumin, 0.03% Proclin300 and 50% Glycerol.
Form/Appearance	Liquid
Concentration	1mg/ml
Storage	Maintain refrigerated at 2-8°C for up to 2 weeks. For long term storage store at -20°C in small aliquots to prevent freeze-thaw cycles.
Note	For research use only
Isotype	IgG
Clonality	Polyclonal
MW	56 kDa
Uniprot ID	P00186
Dilution Range	WB=1:500-2000
Expiration Date	12 months from date of receipt.



Western blot: Lane 1: Mouse Liver; Lane 2: R...