
Product Datasheet

phospho-GSK-3 Beta (Ser9) antibody (orb1151985)

Description

phospho-GSK-3 Beta (Ser9) antibody

Species/Host

Mouse

Reactivity

Human, Mouse, Rat

Conjugation

Unconjugated

Tested

IHC-P, WB

Applications
Immunogen

KLH conjugated synthetic peptide derived from human phospho-GSK-3 Beta (Ser9)

Target

phospho-GSK-3 Beta (Ser9)

Preservatives

0.01M TBS(pH7.4) with 1% rAlbumin, 0.03% Proclin300 and 50% Glycerol.

Form/Appearance

Liquid

Concentration

1mg/ml

Storage

Maintain refrigerated at 2-8°C for up to 2 weeks. For long term storage store at -20°C in small aliquots to prevent freeze-thaw cycles.

Note

For research use only

Isotype

IgG

Clonality

Monoclonal

MW

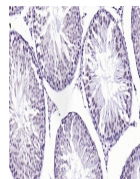
47 kDa

Uniprot ID
[P49841](#)
Dilution Range

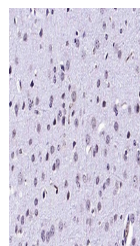
WB=1:500-2000, IHC-P=1:400-800

Expiration Date

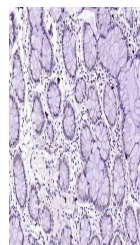
12 months from date of receipt.



IHC-P analysis of rat testis using phospho-GSK-3 Beta (Ser9) antibody.



IHC-P analysis of mouse brain using phospho-GSK-3 Beta (Ser9) antibody.



IHC-P analysis of human colon carcinoma using phospho-GSK-3 Beta (Ser9) antibody.

...