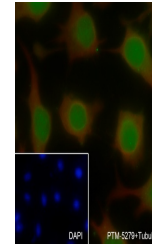


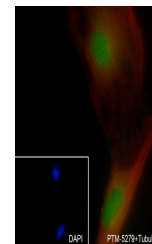
Product Datasheet

XRCC5/Ku80 antibody (orb1151974)

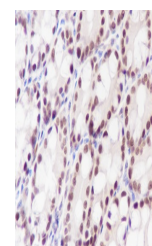
Description	XRCC5/Ku80 antibody
Species/Host	Rabbit
Reactivity	Human, Mouse
Conjugation	Unconjugated
Tested Applications	ICC, IHC-P
Immunogen	KLH conjugated synthetic peptide derived from human XRCC5/Ku80
Target	XRCC5/Ku80
Preservatives	0.01M TBS(pH7.4) with 1% rAlbumin, 0.03% Proclin300 and 50% Glycerol.
Form/Appearance	Liquid
Concentration	1mg/ml
Storage	Maintain refrigerated at 2-8°C for up to 2 weeks. For long term storage store at -20°C in small aliquots to prevent freeze-thaw cycles.
Note	For research use only
Isotype	IgG
Clonality	Recombinant
MW	83 kDa
Uniprot ID	P13010
Dilution Range	IHC-P=1:1000, ICC=1:100
Expiration Date	12 months from date of receipt.



ICC analysis of HeLa cell using Primary ...



ICC analysis of NIH/3T3 cell using Prima...



IHC-P analysis of Mouse colon using Prim...