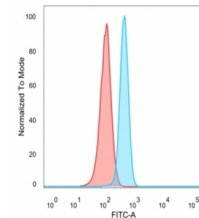


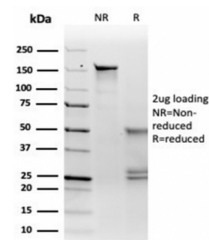
Product Datasheet

MITF antibody (orb1151878)

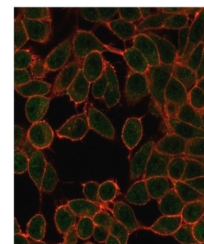
Description	Mouse monoclonal antibody to MITF
Species/Host	Mouse
Reactivity	Human
Conjugation	Unconjugated
Tested Applications	FACS, IF, IP, WB
Immunogen	Recombinant full-length human MITF protein was used as the immunogen for the MITF antibody.
Preservatives	0.2 mg/ml in 1X PBS with 0.1 mg/ml rAlbumin (US sourced), 0.05% sodium azide
Storage	Aliquot the MITF antibody and store frozen at -20°C or colder. Avoid repeated freeze-thaw cycles.
Note	For research use only
Application notes	Optimal dilution of the MITF antibody should be determined by the researcher.
Formula	0.2 mg/ml in 1X PBS with 0.1 mg/ml BSA (US sourced), 0.05% sodium azide
Isotype	Mouse IgG2b
Clonality	Monoclonal
Purity	Protein A/G affinity
Uniprot ID	075030
Hazard Information	This MITF antibody is available for research use only.
Dilution Range	Immunoprecipitation: 1-2ug per 100-500ug of total protein (1ml of cell lysate), Immunofluorescence: 1-2ug/ml, Flow cytometry: 1-2ug/million cells, Western blot: 1-2ug/ml
Expiration Date	12 months from date of receipt.



FACS staining of PFA-fixed human HeLa ce...



SDS-PAGE analysis of purified, BSA-free ...



Immunofluorescent staining of PFA-fixed ...