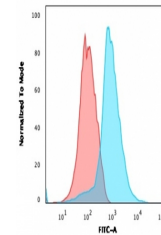


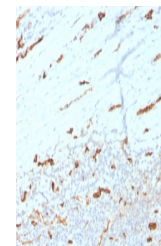
Product Datasheet

CD31 antibody (orb1151843)

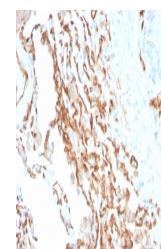
| | |
|----------------------------|--|
| Description | Mouse monoclonal antibody to CD31 |
| Species/Host | Mouse |
| Reactivity | Human |
| Conjugation | Unconjugated |
| Tested Applications | FACS, IF, IHC-P, WB |
| Immunogen | A portion of amino acids 625-738 was used as the immunogen for the PECAM1 antibody. |
| Preservatives | 0.2 mg/ml in 1X PBS with 0.1 mg/ml rAlbumin (US sourced), 0.05% sodium azide |
| Storage | Aliquot the PECAM1 antibody and store frozen at -20°C or colder. Avoid repeated freeze-thaw cycles. |
| Note | For research use only |
| Application notes | Optimal dilution of the PECAM1 antibody should be determined by the researcher. |
| Formula | 0.2 mg/ml in 1X PBS with 0.1 mg/ml BSA (US sourced), 0.05% sodium azide |
| Isotype | Mouse IgG2b, kappa |
| Clonality | Monoclonal |
| Purity | Protein A/G affinity |
| Uniprot ID | P16284 |
| Hazard Information | This PECAM1 antibody is available for research use only. |
| Dilution Range | Flow cytometry: 1-2ug/million cells, Immunofluorescence: 1-2ug/ml, Western blot: 1-2ug/ml, Immunohistochemistry (FFPE): 1-2ug/ml |
| Expiration Date | 12 months from date of receipt. |



FACS staining of human Jurkat cells with...



IHC staining of FFPE human tonsil tissue...



IHC staining of FFPE human colon tissue ...