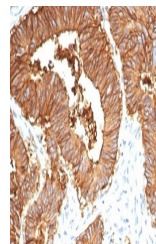


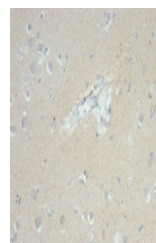
## Product Datasheet

### EpCAM antibody (orb1151838)

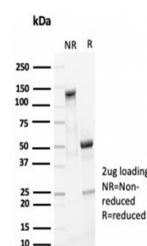
|                            |  |
|----------------------------|--|
| <b>Description</b>         | Rabbit monoclonal antibody to EpCAM  |
| <b>Species/Host</b>        | Rabbit   |
| <b>Reactivity</b>          | Human  |
| <b>Conjugation</b>         | Unconjugated   |
| <b>Tested Applications</b> | IHC-P  |
| <b>Immunogen</b>           | A portion of amino acids 289-314 of human EpCAM was used as the immunogen for the recombinant EpCAM antibody.  |
| <b>Preservatives</b>       | 0.2 mg/ml in 1X PBS with 0.1 mg/ml rAlbumin (US sourced), 0.05% sodium azide                                   |
| <b>Storage</b>             | Aliquot the recombinant EpCAM antibody and store frozen at -20°C or colder. Avoid repeated freeze-thaw cycles. |
| <b>Note</b>                | For research use only  |
| <b>Application notes</b>   | Optimal dilution of the recombinant EpCAM antibody should be determined by the researcher.                     |
| <b>Formula</b>             | 0.2 mg/ml in 1X PBS with 0.1 mg/ml BSA (US sourced), 0.05% sodium azide  |
| <b>Isotype</b>             | Rabbit IgG, kappa  |
| <b>Clonality</b>           | Recombinant  |
| <b>Purity</b>              | Protein A affinity   |
| <b>Uniprot ID</b>          | <a href="#">P16422</a>   |
| <b>Hazard Information</b>  | This recombinant EpCAM antibody is available for research use only.  |
| <b>Dilution Range</b>      | Immunohistochemistry (FFPE): 1-2ug/ml  |
| <b>Expiration Date</b>     | 12 months from date of receipt.  |



IHC staining of FFPE human colon tissue ...



IHC staining of FFPE human brain tissue ...



SDS-PAGE analysis of purified, BSA-free ...