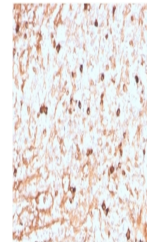


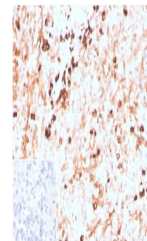
## Product Datasheet

### Lambda Light Chain antibody (orb1151818)

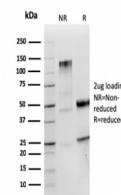
<b>Description</b>	Rabbit monoclonal antibody to Lambda Light Chain
<b>Species/Host</b>	Rabbit
<b>Reactivity</b>	Human
<b>Conjugation</b>	Unconjugated
<b>Tested Applications</b>	IHC-P
<b>Immunogen</b>	Recombinant full-length human IGL protein was used as the immunogen for the recombinant Lambda Light Chain antibody.
<b>Preservatives</b>	0.2 mg/ml in 1X PBS with 0.1 mg/ml rAlbumin (US sourced), 0.05% sodium azide
<b>Storage</b>	Aliquot the recombinant Lambda Light Chain antibody and store frozen at -20°C or colder. Avoid repeated freeze-thaw cycles.
<b>Note</b>	For research use only
<b>Application notes</b>	Optimal dilution of the recombinant Lambda Light Chain antibody should be determined by the researcher.
<b>Formula</b>	0.2 mg/ml in 1X PBS with 0.1 mg/ml BSA (US sourced), 0.05% sodium azide
<b>Isotype</b>	Rabbit IgG
<b>Clonality</b>	Recombinant
<b>Purity</b>	Protein A/G affinity
<b>Uniprot ID</b>	<b>P01701, P01842</b>
<b>Hazard Information</b>	This recombinant Lambda Light Chain antibody is available for research use only.
<b>Dilution Range</b>	Immunohistochemistry (FFPE): 1-2ug/ml
<b>Expiration Date</b>	12 months from date of receipt.



IHC staining of FFPE human spleen tissue...



IHC staining of FFPE human spleen tissue...



SDS-PAGE analysis of purified, BSA-free ...