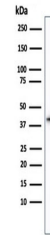


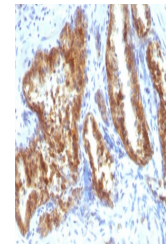
Product Datasheet

AMACR antibody (orb1151814)

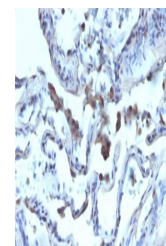
Description	Rabbit polyclonal antibody to AMACR
Species/Host	Rabbit
Reactivity	Human
Conjugation	Unconjugated
Tested Applications	IHC-P, WB
Immunogen	A synthetic peptide from human AMACR protein was used as the immunogen for the AMACR antibody.
Preservatives	0.2 mg/ml in 1X PBS with 0.1 mg/ml rAlbumin (US sourced), 0.05% sodium azide
Storage	Aliquot the AMACR antibody and store frozen at -20°C or colder. Avoid repeated freeze-thaw cycles.
Note	For research use only
Application notes	Optimal dilution of the AMACR antibody should be determined by the researcher.
Formula	0.2 mg/ml in 1X PBS with 0.1 mg/ml BSA (US sourced), 0.05% sodium azide
Isotype	Rabbit IgG
Clonality	Polyclonal
Purity	Protein A affinity
Uniprot ID	Q9UHK6
Hazard Information	This AMACR antibody is available for research use only.
Dilution Range	Western blot: 1:50-1:100, Immunohistochemistry (FFPE): 1:50-1:100
Expiration Date	12 months from date of receipt.



Western blot testing of human kidney tis...



IHC staining of FFPE human prostate carc...



IHC staining of FFPE human lung carcinom...