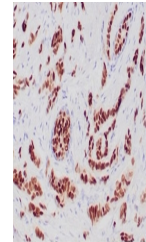


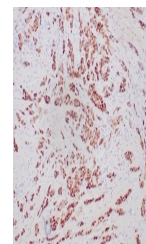
Product Datasheet

Progesterone Receptor antibody (orb1151806)

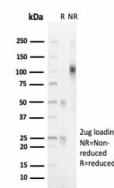
| | |
|----------------------------|--|
| Description | Rabbit monoclonal antibody to Progesterone Receptor |
| Species/Host | Rabbit |
| Reactivity | Human |
| Conjugation | Unconjugated |
| Tested Applications | IHC-P |
| Immunogen | A portion of amino acids 400-600 was used as the immunogen for the recombinant Progesterone Receptor antibody. |
| Preservatives | 0.2 mg/ml in 1X PBS with 0.1 mg/ml rAlbumin (US sourced), 0.05% sodium azide |
| Storage | Aliquot the recombinant Progesterone Receptor antibody and store frozen at -20°C or colder. Avoid repeated freeze-thaw cycles. |
| Note | For research use only |
| Application notes | Optimal dilution of the recombinant Progesterone Receptor antibody should be determined by the researcher. |
| Formula | 0.2 mg/ml in 1X PBS with 0.1 mg/ml BSA (US sourced), 0.05% sodium azide |
| Isotype | Rabbit IgG, kappa |
| Clonality | Recombinant |
| Purity | Protein A/G affinity |
| Uniprot ID | P06401 |
| Hazard Information | This recombinant Progesterone Receptor antibody is available for research use only. |
| Dilution Range | Immunohistochemistry (FFPE): 1-2ug/ml |
| Expiration Date | 12 months from date of receipt. |



IHC staining of FFPE human breast carcin...



IHC staining of FFPE human breast carcin...



SDS-PAGE analysis of purified, BSA-free ...