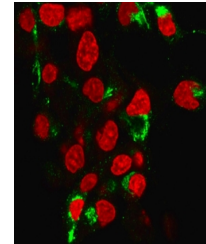


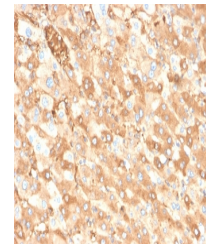
Product Datasheet

Albumin antibody (orb1151792)

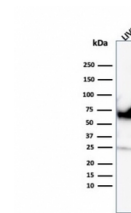
Description	Rabbit monoclonal antibody to Albumin
Species/Host	Rabbit
Reactivity	Human
Conjugation	Unconjugated
Tested Applications	ELISA, IF, IHC-P, WB
Immunogen	Recombinant full-length human ALB protein was used as the immunogen for the recombinant Albumin antibody.
Preservatives	0.2 mg/ml in 1X PBS with 0.1 mg/ml rAlbumin (US sourced), 0.05% sodium azide
Storage	Aliquot the recombinant Albumin antibody and store frozen at -20°C or colder. Avoid repeated freeze-thaw cycles.
Note	For research use only
Application notes	Optimal dilution of the recombinant Albumin antibody should be determined by the researcher.
Formula	0.2 mg/ml in 1X PBS with 0.1 mg/ml BSA (US sourced), 0.05% sodium azide
Isotype	Rabbit IgG
Clonality	Recombinant
Purity	Protein A/G affinity
Uniprot ID	P02768
Hazard Information	This recombinant Albumin antibody is available for research use only.
Dilution Range	ELISA (order BSA-free format for coating), Immunofluorescence: 1-2ug/ml, Western blot: 1-2ug/ml, Immunohistochemistry (FFPE): 1-2ug/ml
Expiration Date	12 months from date of receipt.



Immunofluorescent staining of human HeP-...



IHC staining of FFPE human liver carcino...



Western blot testing of human liver lysa...