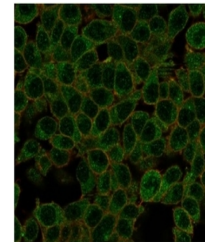


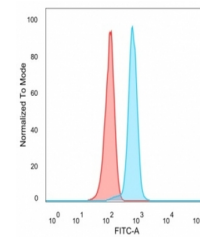
Product Datasheet

ID1 antibody (orb1151766)

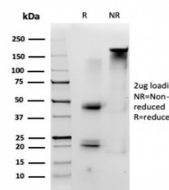
Description	Mouse monoclonal antibody to ID1
Species/Host	Mouse
Reactivity	Human
Conjugation	Unconjugated
Tested Applications	ELISA, FACS, IF
Immunogen	A portion of amino acids 5-150 was used as the immunogen for the ID1 antibody.
Preservatives	0.2 mg/ml in 1X PBS with 0.1 mg/ml rAlbumin (US sourced), 0.05% sodium azide
Storage	Aliquot the ID1 antibody and store frozen at -20°C or colder. Avoid repeated freeze-thaw cycles.
Note	For research use only
Application notes	Optimal dilution of the ID1 antibody should be determined by the researcher.
Formula	0.2 mg/ml in 1X PBS with 0.1 mg/ml BSA (US sourced), 0.05% sodium azide
Isotype	Mouse IgG1
Clonality	Monoclonal
Purity	Protein A/G affinity
Uniprot ID	P41134
Hazard Information	This ID1 antibody is available for research use only.
Dilution Range	ELISA (order BSA-free format for coating), Flow cytometry: 1-2ug/million cells, Immunofluorescence: 1-2ug/ml
Expiration Date	12 months from date of receipt.



Immunofluorescent staining of PFA-fixed ...



FACS staining of PFA-fixed human HeLa ce...



SDS-PAGE analysis of purified, BSA-free ...