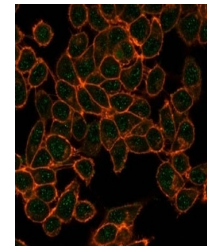


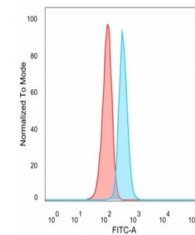
Product Datasheet

CBFB antibody (orb1151731)

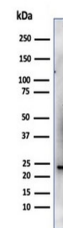
Description	Mouse monoclonal antibody to CBFB
Species/Host	Mouse
Reactivity	Human
Conjugation	Unconjugated
Tested Applications	ELISA, FACS, IF, WB
Immunogen	Recombinant full-length human CBFB protein was used as the immunogen for the CBFB antibody.
Preservatives	0.2 mg/ml in 1X PBS with 0.1 mg/ml rAlbumin (US sourced), 0.05% sodium azide
Storage	Aliquot the CBFB antibody and store frozen at -20°C or colder. Avoid repeated freeze-thaw cycles.
Note	For research use only
Application notes	Optimal dilution of the CBFB antibody should be determined by the researcher.
Formula	0.2 mg/ml in 1X PBS with 0.1 mg/ml BSA (US sourced), 0.05% sodium azide
Isotype	Mouse IgG2b
Clonality	Monoclonal
Purity	Protein A/G affinity
Uniprot ID	Q13951
Hazard Information	This CBFB antibody is available for research use only.
Dilution Range	ELISA (order BSA-free format for coating),Western blot: 1-2ug/ml,Flow cytometry: 1-2ug/million cells,Immunofluorescence: 1-2ug/ml
Expiration Date	12 months from date of receipt.



Immunofluorescent staining of PFA-fixed ...



FACS staining of PFA-fixed human HeLa ce...



Western blot testing of human HeLa cell ...