

---

## Product Datasheet

### SP100 antibody (orb1151713)

**Description**

Mouse monoclonal antibody to SP100

**Species/Host**

Mouse

**Reactivity**

Human

**Conjugation**

Unconjugated

**Tested**

ELISA, FACS, IF, IHC-P, IP, WB

**Applications**
**Immunogen**

Recombinant full-length human SP100 protein was used as the immunogen for the SP100 antibody.

**Preservatives**

0.2 mg/ml in 1X PBS with 0.1 mg/ml rAlbumin (US sourced), 0.05% sodium azide

**Storage**

Aliquot the SP100 antibody and store frozen at -20°C or colder. Avoid repeated freeze-thaw cycles.

**Note**

For research use only

**Application notes**

Optimal dilution of the SP100 antibody should be determined by the researcher.

**Formula**

0.2 mg/ml in 1X PBS with 0.1 mg/ml BSA (US sourced), 0.05% sodium azide

**Isotype**

Mouse IgG2b

**Clonality**

Monoclonal

**Purity**

Protein A/G affinity

**Uniprot ID**

[P23497](#)

**Hazard**
**Information**

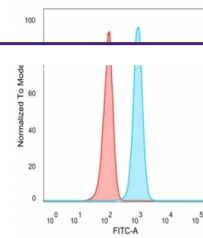
This SP100 antibody is available for research use only.

**Dilution Range**

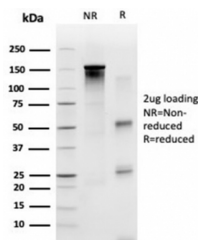
ELISA (For coating, order BSA-free format), Western blot: 1-2ug/ml, Immunofluorescence: 0.5-2ug/ml, Immunoprecipitation: 1-2ug per 100-500ug of total protein (1ml of cell lysate), Flow cytometry: 0.5-2ug/million cells, Immunohistochemistry (FFPE): 1-2ug/ml

**Expiration Date**

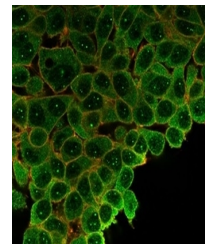
12 months from date of receipt.



FACS staining of PFA-fixed human HeLa ce...



SDS-PAGE analysis of purified, BSA-free ...



Immunofluorescent staining of PFA-fixed ...