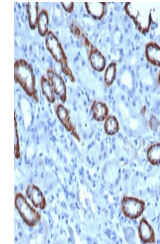


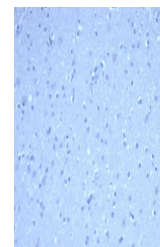
Product Datasheet

TOM1L1 antibody (orb1151682)

Description	Mouse monoclonal antibody to TOM1L1
Species/Host	Mouse
Reactivity	Human
Conjugation	Unconjugated
Tested Applications	IHC-P
Immunogen	Recombinant full-length human TOM1L1 protein was used as the immunogen for the TOM1L1 antibody.
Preservatives	0.2 mg/ml in 1X PBS with 0.1 mg/ml rAlbumin (US sourced), 0.05% sodium azide
Storage	Aliquot the TOM1L1 antibody and store frozen at -20°C or colder. Avoid repeated freeze-thaw cycles.
Note	For research use only
Application notes	Optimal dilution of the TOM1L1 antibody should be determined by the researcher.
Formula	0.2 mg/ml in 1X PBS with 0.1 mg/ml BSA (US sourced), 0.05% sodium azide
Isotype	Mouse IgG
Clonality	Monoclonal
Purity	Protein A/G affinity
Uniprot ID	O75674
Hazard Information	This TOM1L1 antibody is available for research use only.
Dilution Range	Immunohistochemistry (FFPE): 2-4ug/ml
Expiration Date	12 months from date of receipt.



IHC staining of FFPE human kidney tissue...



Negative control: IHC staining of FFPE h...