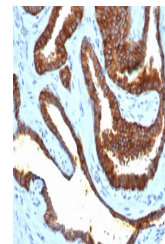


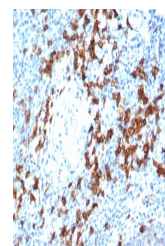
Product Datasheet

CD38 antibody (orb1151661)

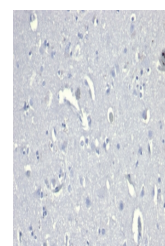
Description	Rabbit monoclonal antibody to CD38
Species/Host	Rabbit
Reactivity	Human
Conjugation	Unconjugated
Tested Applications	IHC-P, WB
Immunogen	A portion of amino acids 200-300 of human CD38 protein was used as the immunogen for the recombinant CD38 antibody.
Preservatives	0.2 mg/ml in 1X PBS with 0.1 mg/ml rAlbumin (US sourced), 0.05% sodium azide
Storage	Aliquot the recombinant CD38 antibody and store frozen at -20°C or colder. Avoid repeated freeze-thaw cycles.
Note	For research use only
Application notes	Optimal dilution of the recombinant CD38 antibody should be determined by the researcher.
Formula	0.2 mg/ml in 1X PBS with 0.1 mg/ml BSA (US sourced), 0.05% sodium azide
Isotype	Rabbit IgG, kappa
Clonality	Recombinant
Purity	Protein A/G affinity
Uniprot ID	P28907
Hazard Information	This recombinant CD38 antibody is available for research use only.
Dilution Range	Western blot: 1-2ug/ml, Immunohistochemistry (FFPE): 1-2ug/ml
Expiration Date	12 months from date of receipt.



IHC staining of FFPE human prostate adenocarcinoma tissue.



IHC staining of FFPE human tonsil tissue.



Negative control: IHC staining of FFPE tissue.