

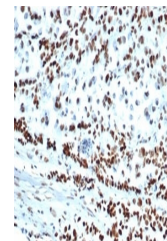
Product Datasheet

MSH6 antibody (orb1151659)

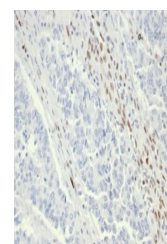
Description	Rabbit monoclonal antibody to MSH6
Species/Host	Rabbit
Reactivity	Human
Conjugation	Unconjugated
Tested Applications	ELISA, IHC-P, WB
Immunogen	A portion of amino acids 1-100 was used as the immunogen for the recombinant MSH6 antibody.
Preservatives	0.2 mg/ml in 1X PBS with 0.1 mg/ml rAlbumin (US sourced), 0.05% sodium azide
Storage	Aliquot the recombinant MSH6 antibody and store frozen at -20°C or colder. Avoid repeated freeze-thaw cycles.
Note	For research use only
Application notes	Optimal dilution of the recombinant MSH6 antibody should be determined by the researcher.
Formula	0.2 mg/ml in 1X PBS with 0.1 mg/ml BSA (US sourced), 0.05% sodium azide
Isotype	Rabbit IgG
Clonality	Recombinant
Purity	Protein A/G affinity
Uniprot ID	P52701
Hazard Information	This recombinant MSH6 antibody is available for research use only.
Dilution Range	ELISA (order BSA-free format for coating), Western blot: 1-2ug/ml, Immunohistochemistry (FFPE): 1-2ug/ml
Expiration Date	12 months from date of receipt.



Western blot analysis of human HCT-116 c...



IHC staining of FFPE human colon carcino...



IHC staining of FFPE human colon tissue ...