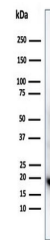


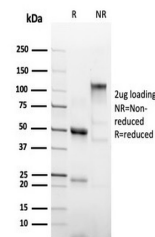
Product Datasheet

His Tag antibody (orb1151621)

Description	Rabbit monoclonal antibody to His Tag
Species/Host	Rabbit
Reactivity	All
Conjugation	Unconjugated
Tested Applications	FACS, IF, WB
Immunogen	Hexa-histidine tagged human protein was used as the immunogen for the recombinant Poly His antibody.
Preservatives	0.2 mg/ml in 1X PBS with 0.1 mg/ml rAlbumin (US sourced), 0.05% sodium azide
Storage	Aliquot the recombinant Poly His antibody and store frozen at -20°C or colder. Avoid repeated freeze-thaw cycles.
Note	For research use only
Application notes	Optimal dilution of the recombinant Poly His antibody should be determined by the researcher.
Formula	0.2 mg/ml in 1X PBS with 0.1 mg/ml BSA (US sourced), 0.05% sodium azide
Isotype	Rabbit IgG
Clonality	Recombinant
Purity	Protein A/G affinity
Uniprot ID	Not Applicable
Hazard Information	This recombinant Poly His antibody is available for research use only.
Dilution Range	Western blot: 1-2ug/ml, Flow cytometry: 1-2ug/million cells, Immunofluorescence: 1-2ug/ml
Expiration Date	12 months from date of receipt.



Western blot testing of His-tagged prote...



SDS-PAGE analysis of purified, BSA-free ...