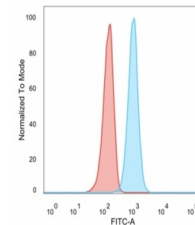


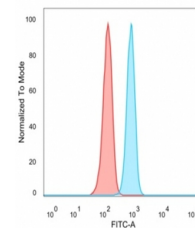
Product Datasheet

RXR beta antibody (orb1151602)

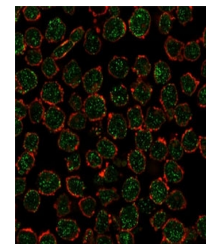
Description	Mouse monoclonal antibody to RXR beta
Species/Host	Mouse
Reactivity	Human
Conjugation	Unconjugated
Tested Applications	FACS, IF, IHC-P, WB
Immunogen	Recombinant full-length human RXR beta protein was used as the immunogen for the RXRB antibody.
Preservatives	0.2 mg/ml in 1X PBS with 0.1 mg/ml rAlbumin (US sourced), 0.05% sodium azide
Storage	Aliquot the RXRB antibody and store frozen at -20°C or colder. Avoid repeated freeze-thaw cycles.
Note	For research use only
Application notes	Optimal dilution of the RXRB antibody should be determined by the researcher.
Formula	0.2 mg/ml in 1X PBS with 0.1 mg/ml BSA (US sourced), 0.05% sodium azide
Isotype	Mouse IgG2a
Clonality	Monoclonal
Purity	Protein A/G affinity
Uniprot ID	P28702
Hazard Information	This RXRB antibody is available for research use only.
Dilution Range	Flow cytometry: 1-2ug/million cells, Immunofluorescence: 1-2ug/ml, Western blot: 1-2ug/ml, Immunohistochemistry (FFPE): 1-2ug/ml
Expiration Date	12 months from date of receipt.



FACS staining of PFA-fixed human U-87 ce...



FACS staining of PFA-fixed human HeLa ce...



Immunofluorescent staining of PFA-fixed ...