

---

## Product Datasheet

### PDX1 antibody (orb1151582)

**Description**

Mouse monoclonal antibody to PDX1

**Species/Host**

Mouse

**Reactivity**

Human

**Conjugation**

Unconjugated

**Tested Applications**

FACS, IF

**Immunogen**

Recombinant full-length human PDX1 protein was used as the immunogen for the Pancreas/duodenum homeobox protein 1 antibody.

**Preservatives**

0.2 mg/ml in 1X PBS with 0.1 mg/ml rAlbumin (US sourced), 0.05% sodium azide

**Storage**

Aliquot the Pancreas/duodenum homeobox protein 1 antibody and store frozen at -20°C or colder. Avoid repeated freeze-thaw cycles.

**Note**

For research use only

**Application notes**

Optimal dilution of the Pancreas/duodenum homeobox protein 1 antibody should be determined by the researcher.

**Formula**

0.2 mg/ml in 1X PBS with 0.1 mg/ml BSA (US sourced), 0.05% sodium azide

**Isotype**

Mouse IgG2c

**Clonality**

Monoclonal

**Purity**

Protein A/G affinity

**Uniprot ID**

**P52945**

**Hazard Information**

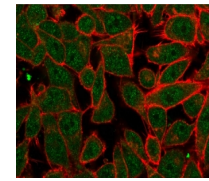
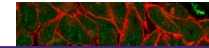
This Pancreas/duodenum homeobox protein 1 antibody is available for research use only.

**Dilution Range**

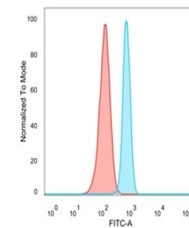
Flow cytometry: 1-2ug/million cells, Immunofluorescence: 1-2ug/ml

**Expiration Date**

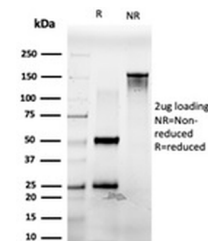
12 months from date of receipt.



Immunofluorescent staining of PFA-fixed ...



FACS staining of PFA-fixed human HeLa ce...



SDS-PAGE analysis of purified, BSA-free ...