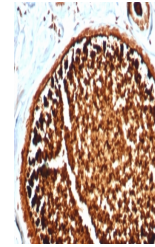


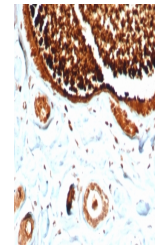
Product Datasheet

Mammaglobin A antibody (orb1151578)

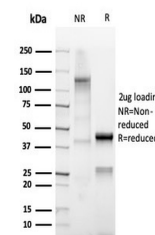
Description	Rabbit monoclonal antibody to Mammaglobin A
Species/Host	Rabbit
Reactivity	Human
Conjugation	Unconjugated
Tested Applications	IHC-P
Immunogen	Recombinant full-length human Mammaglobin/SCGB2A2 protein was used as the immunogen for the recombinant SCGB2A2 antibody.
Preservatives	0.2 mg/ml in 1X PBS with 0.1 mg/ml rAlbumin (US sourced), 0.05% sodium azide
Storage	Aliquot the recombinant SCGB2A2 antibody and store frozen at -20°C or colder. Avoid repeated freeze-thaw cycles.
Note	For research use only
Application notes	Optimal dilution of the recombinant SCGB2A2 antibody should be determined by the researcher.
Formula	0.2 mg/ml in 1X PBS with 0.1 mg/ml BSA (US sourced), 0.05% sodium azide
Isotype	Rabbit IgG
Clonality	Recombinant
Purity	Protein A/G affinity
Uniprot ID	Q13296
Hazard Information	This recombinant SCGB2A2 antibody is available for research use only.
Dilution Range	Immunohistochemistry (FFPE): 1-2ug/ml
Expiration Date	12 months from date of receipt.



IHC staining of FFPE human lactating bre...



IHC staining of FFPE human lactating bre...



SDS-PAGE analysis of purified, BSA-free ...