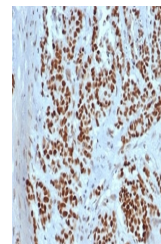


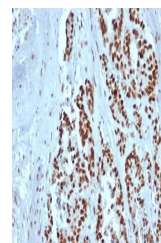
Product Datasheet

MSH2 antibody (orb1151551)

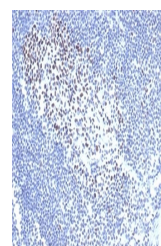
Description	Mouse monoclonal antibody to MSH2
Species/Host	Mouse
Reactivity	Canine, Feline, Human
Conjugation	Unconjugated
Tested Applications	IHC-P, WB
Immunogen	Recombinant full-length human MSH2 protein was used as the immunogen for the recombinant MSH2 antibody.
Preservatives	0.2 mg/ml in 1X PBS with 0.1 mg/ml rAlbumin (US sourced), 0.05% sodium azide
Storage	Aliquot the recombinant MSH2 antibody and store frozen at -20°C or colder. Avoid repeated freeze-thaw cycles.
Note	For research use only
Application notes	Optimal dilution of the recombinant MSH2 antibody should be determined by the researcher.
Formula	0.2 mg/ml in 1X PBS with 0.1 mg/ml BSA (US sourced), 0.05% sodium azide
Isotype	Mouse IgG2a, kappa
Clonality	Recombinant
Purity	Protein A/G affinity
Uniprot ID	P43246
Hazard Information	This recombinant MSH2 antibody is available for research use only.
Dilution Range	Western blot: 1-2ug/ml, Immunohistochemistry (FFPE): 1-2ug/ml
Expiration Date	12 months from date of receipt.



IHC staining of FFPE human colon tissue ...



IHC staining of FFPE human colon tissue ...



IHC staining of FFPE cat lymph node tiss...