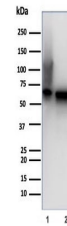


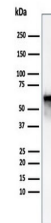
Product Datasheet

HSP60 antibody (orb1151535)

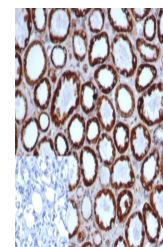
Description	Mouse monoclonal antibody to HSP60
Species/Host	Mouse
Reactivity	Human, Mouse, Rat
Conjugation	Unconjugated
Tested Applications	IHC-P, WB
Immunogen	Recombinant human full-length HSP60 protein was used as the immunogen for the recombinant HSP60 antibody. Its epitope is localized between amino acids 383-447 of human hsp60.
Preservatives	0.2 mg/ml in 1X PBS with 0.1 mg/ml rAlbumin (US sourced), 0.05% sodium azide
Storage	Aliquot the recombinant HSP60 antibody and store frozen at -20°C or colder. Avoid repeated freeze-thaw cycles.
Note	For research use only
Application notes	Optimal dilution of the recombinant HSP60 antibody should be determined by the researcher.
Formula	0.2 mg/ml in 1X PBS with 0.1 mg/ml BSA (US sourced), 0.05% sodium azide
Isotype	Mouse IgG1, kappa
Clonality	Recombinant
Purity	Protein A/G affinity
Uniprot ID	P10809
Hazard Information	This recombinant HSP60 antibody is available for research use only.
Dilution Range	Western blot: 1-2ug/ml, Immunohistochemistry (FFPE): 1-2ug/ml
Expiration Date	12 months from date of receipt.



Western blot testing of human 1) Hep-2 a...



Western blot testing of human Hep-2 cell...



IHC staining of FFPE human kidney tissue...