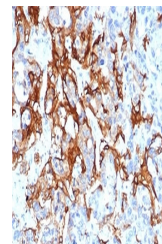


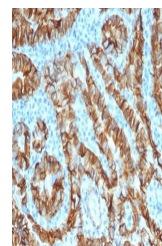
Product Datasheet

TROP2 antibody (orb1151534)

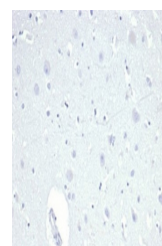
Description	Rabbit monoclonal antibody to TROP2
Species/Host	Rabbit
Reactivity	Human
Conjugation	Unconjugated
Tested Applications	IHC-P, WB
Immunogen	A portion of amino acids 31-274 was used as the immunogen for the recombinant TROP2 antibody.
Preservatives	0.2 mg/ml in 1X PBS with 0.1 mg/ml rAlbumin (US sourced), 0.05% sodium azide
Storage	Aliquot the recombinant TROP2 antibody and store frozen at -20°C or colder. Avoid repeated freeze-thaw cycles.
Note	For research use only
Application notes	Optimal dilution of the recombinant TROP2 antibody should be determined by the researcher.
Formula	0.2 mg/ml in 1X PBS with 0.1 mg/ml BSA (US sourced), 0.05% sodium azide
Isotype	Rabbit IgG
Clonality	Recombinant
Purity	Protein A/G affinity
Uniprot ID	P09758
Hazard Information	This recombinant TROP2 antibody is available for research use only.
Dilution Range	Western blot: 1-2ug/ml, Immunohistochemistry (FFPE): 1-2ug/ml
Expiration Date	12 months from date of receipt.



IHC staining of FFPE human colorectal li...



IHC staining of FFPE human thyroid carci...



Negative control: IHC staining of FFPE h...