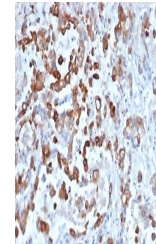


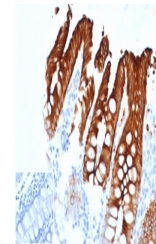
Product Datasheet

Cytokeratin 20 antibody (orb1151515)

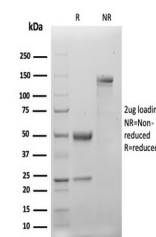
Description	Rabbit monoclonal antibody to Cytokeratin 20
Species/Host	Rabbit
Reactivity	Human
Conjugation	Unconjugated
Tested Applications	IHC-P
Immunogen	A portion of amino acids 196-323 was used as the immunogen for the recombinant Keratin 20 antibody.
Preservatives	0.2 mg/ml in 1X PBS with 0.1 mg/ml rAlbumin (US sourced), 0.05% sodium azide
Storage	Aliquot the recombinant Keratin 20 antibody and store frozen at -20°C or colder. Avoid repeated freeze-thaw cycles.
Note	For research use only
Application notes	Optimal dilution of the recombinant Keratin 20 antibody should be determined by the researcher.
Formula	0.2 mg/ml in 1X PBS with 0.1 mg/ml BSA (US sourced), 0.05% sodium azide
Isotype	Rabbit IgG, kappa
Clonality	Recombinant
Purity	Protein A/G affinity
Uniprot ID	P35900
Hazard Information	This recombinant Keratin 20 antibody is available for research use only.
Dilution Range	Immunohistochemistry (FFPE): 2-4ug/ml
Expiration Date	12 months from date of receipt.



IHC staining of FFPE human colon tissue ...



IHC staining of FFPE human colon carcino...



SDS-PAGE analysis of purified, BSA-free ...