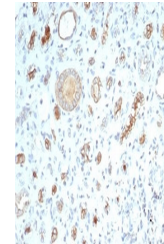


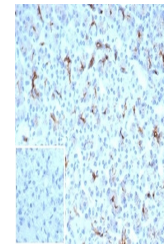
Product Datasheet

CFTR antibody (orb1151462)

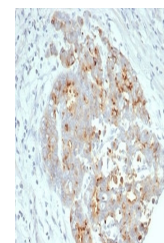
Description	Rabbit monoclonal antibody to CFTR
Species/Host	Rabbit
Reactivity	Human
Conjugation	Unconjugated
Tested Applications	IHC-P
Immunogen	A portion of amino acids 550-850 was used as the immunogen for the recombinant CFTR antibody.
Preservatives	0.2 mg/ml in 1X PBS with 0.1 mg/ml rAlbumin (US sourced), 0.05% sodium azide
Storage	Aliquot the recombinant CFTR antibody and store frozen at -20°C or colder. Avoid repeated freeze-thaw cycles.
Note	For research use only
Application notes	Optimal dilution of the recombinant CFTR antibody should be determined by the researcher.
Formula	0.2 mg/ml in 1X PBS with 0.1 mg/ml BSA (US sourced), 0.05% sodium azide
Isotype	Rabbit IgG, kappa
Clonality	Recombinant
Purity	Protein A/G affinity
Uniprot ID	P13569
Hazard Information	This recombinant CFTR antibody is available for research use only.
Dilution Range	Immunohistochemistry (FFPE): 1-2ug/ml
Expiration Date	12 months from date of receipt.



IHC staining of FFPE human kidney tissue...



IHC staining of FFPE human pancreatic ti...



IHC staining of FFPE human ovarian carci...