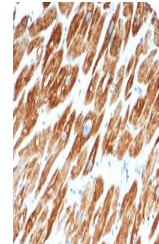


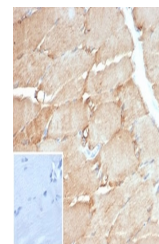
Product Datasheet

Desmin antibody (orb1151455)

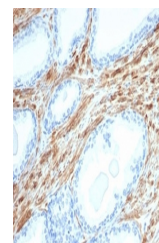
Description	Mouse monoclonal antibody to Desmin
Species/Host	Mouse
Reactivity	Bovine, Canine, Equine, Feline, Human
Conjugation	Unconjugated
Tested Applications	IHC-P
Immunogen	Recombinant full-length human desmin protein was used as the immunogen for the Desmin antibody.
Preservatives	0.2 mg/ml in 1X PBS with 0.1 mg/ml rAlbumin (US sourced), 0.05% sodium azide
Storage	Aliquot the Desmin antibody and store frozen at -20°C or colder. Avoid repeated freeze-thaw cycles.
Note	For research use only
Application notes	Optimal dilution of the Desmin antibody should be determined by the researcher.
Formula	0.2 mg/ml in 1X PBS with 0.1 mg/ml BSA (US sourced), 0.05% sodium azide
Isotype	Mouse IgG2b, kappa
Clonality	Monoclonal
Purity	Protein A/G affinity
Uniprot ID	P17661
Hazard Information	This Desmin antibody is available for research use only.
Dilution Range	Immunohistochemistry (FFPE): 2-4ug/ml
Expiration Date	12 months from date of receipt.



IHC staining of FFPE human cardiac muscul...



IHC staining of FFPE human skeletal musc...



IHC staining of FFPE human prostate tiss...