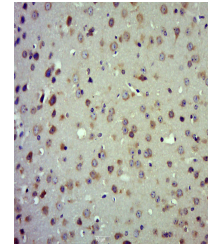


Product Datasheet

C11ORF46 antibody (orb1151)

Description	C11ORF46 antibody
Species/Host	Rabbit
Reactivity	Mouse
Conjugation	Unconjugated
Tested Applications	IHC-P
Immunogen	KLH conjugated synthetic peptide derived from human C11ORF46 (21-120/260 aa)
Target	C11ORF46
Preservatives	0.01M TBS(pH7.4) with 1% rAlbumin, 0.03% Proclin300 and 50% Glycerol.
Form/Appearance	Liquid
Concentration	1mg/ml
Storage	Shipped at 4°C. Store at -20 °C for one year. Avoid repeated freeze/thaw cycles.
Note	For research use only
Isotype	IgG
Clonality	Polyclonal
MW	29 kDa
Uniprot ID	Q8N8R7
Dilution Range	IHC-P=1:100-500, WB=1:500-2000, IHC-F=1:100-500, IF=1:50-200, ELISA=1:5000-10000
Expiration Date	12 months from date of receipt.



Paraformaldehyde-fixed, paraffin embedde...