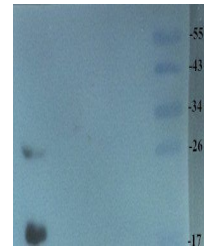


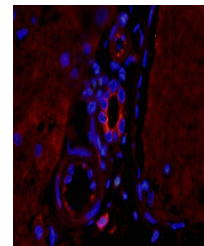
Product Datasheet

TNF alpha antibody (orb11495)

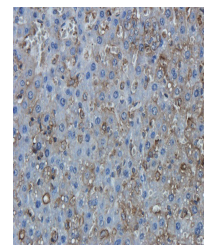
Description	TNF alpha antibody
Species/Host	Rabbit
Conjugation	Unconjugated
Tested Applications	ELISA, ICC, IF, IHC-P, WB
Immunogen	KLH conjugated synthetic peptide derived from human TNF alpha. Please contact us for the exact immunogen sequence. The peptide is available as orb374753.
Target	TNF alpha
Form/Appearance	10 mM PBS, 0.02% sodium azide
Concentration	- 100 µg (in 200 µl): 0.5 mg/ml- 200 µg (in 400 µl): 0.5 mg/ml
Storage	Store at 4°C for up to two weeks. For long term storage, aliquot and store at -20°C, avoid freeze/thaw cycles.
Note	For research use only
Isotype	IgG
Clonality	Polyclonal
Purity	Purified by Protein A affinity chromatography.
MW	27 kDa
Uniprot ID	P06804 , P16599 , P01375
NCBI	21 , 31 , 000594 , 000585
Entrez	7124
Dilution Range	IHC-P: 1:100, WB: 1:100-800
Expiration Date	12 months from date of receipt.



Western blot analysis of rat liver tissue...



IF image of pig liver vessel tissue usin...



Immunohistochemical staining of paraffin...