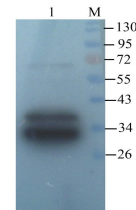


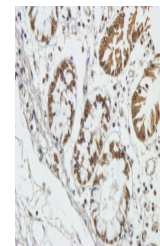
Product Datasheet

TIMP1 antibody (orb11483)

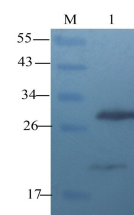
Description	TIMP1 antibody
Species/Host	Rabbit
Conjugation	Unconjugated
Tested Applications	ELISA, ICC, IF, IHC-P, WB
Immunogen	KLH conjugated synthetic peptide derived from human TIMP1. Please contact us for the exact immunogen sequence. The peptide is available as orb374752.
Target	TIMP1
Form/Appearance	10 mM PBS, 0.02% sodium azide
Concentration	- 100 µg (in 200 µl): 0.5 mg/ml- 200 µg (in 400 µl): 0.5 mg/ml
Storage	Store at 4°C for up to two weeks. For long term storage, aliquot and store at -20°C, avoid freeze/thaw cycles.
Note	For research use only
Isotype	IgG
Clonality	Polyclonal
Purity	Polyclonal antibodies are purified by peptide affinity chromatography
MW	23 kDa
Uniprot ID	P12032 , P01033
NCBI	11 , 21 , 003254 , 003245
Entrez	7076
Dilution Range	IF/ICC: 1:100, IHC-P: 1:200, WB: 1:200-1000
Expiration Date	12 months from date of receipt.



WB analysis of HeLa cells lysate using TIMP1 antibody



IHC-P staining of pig large intestines tissue



Western blot analysis of rat lung tissue