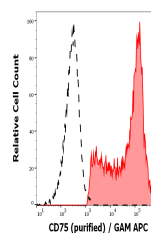


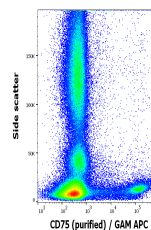
## Product Datasheet

### CD75 Antibody (orb1147810)

<b>Description</b>	CD75 is a lactosamine structure, which is present mainly on the surface of germinal center B cells. ...
<b>Reactivity</b>	Human
<b>Conjugation</b>	Unconjugated
<b>Tested Applications</b>	FC, IHC-Fr, IHC-P
<b>Immunogen</b>	Stimulated human PBL
<b>Target</b>	CD75
<b>Preservatives</b>	Tris buffered saline (TBS), pH 8.0, 15 mM sodium azide
<b>Concentration</b>	1 mg/ml
<b>Storage</b>	Store at 2-8°C. Do not freeze.
<b>Note</b>	For research use only
<b>Application notes</b>	Flow cytometry: Recommended dilution: 1-4 µg/ml.
<b>Isotype</b>	Mouse IgM kappa
<b>Clonality</b>	Monoclonal
<b>Purity</b>	Purified by sequential steps of physicochemical fractionation (differential precipitation and solid-phase chromatography methods).
<b>Dilution Range</b>	Flow cytometry: Recommended dilution: 1-4 µg/ml.
<b>Expiration Date</b>	12 months from date of receipt.



Separation of human CD75 positive lympho...



Flow cytometry surface staining pattern ...