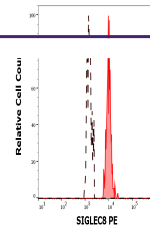

Product Datasheet

SIGLEC8 Antibody (PE) (orb1147807)

Description

SIGLEC8 is a sialic acid binding lectin similar to CD33. In



Separation of human SIGLEC8 positive eos...

Reactivity	Human
Conjugation	PE
Tested Applications	FC
Immunogen	Extracellular domain of human SIGLEC8 fused with Fc fragment of human IgG1
Target	SIGLEC8
Preservatives	Stabilizing phosphate buffered saline (PBS), pH 7.4, 15 mM sodium azide
Storage	Store at 2-8°C. Protect from prolonged exposure to light. Do not freeze.
Note	For research use only
Application notes	Flow cytometry: The reagent is designed for analysis of human blood cells using 10 µl reagent / 100 µl of whole blood or 10 ⁶ cells in a suspension. The content of a vial (1 ml) is sufficient for 100 tests.
Isotype	Mouse IgG1
Clonality	Monoclonal
Purity	Purified antibody is conjugated with R-phycoerythrin (PE) under optimum conditions. Unconjugated antibody and free fluorochrome are removed by size-exclusion chromatography.
Uniprot ID	Q9NYZ4
Entrez	27181
Dilution Range	Flow cytometry: The reagent is designed for analysis of human blood cells using 10 µl reagent / 100 µl of whole blood or 10 ⁶ cells in a suspension. The content of a vial (1 ml) is sufficient for 100 tests.
Expiration Date	12 months from date of receipt.