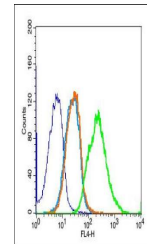


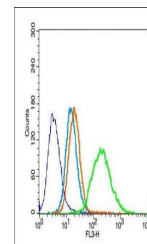
Product Datasheet

Thymosin alpha 1 antibody (orb11478)

Description	Thymosin alpha 1 antibody
Species/Host	Rabbit
Reactivity	Human, Rat
Conjugation	Unconjugated
Tested Applications	ICC
Immunogen	KLH conjugated synthetic peptide derived from human Thymosin Alpha-1 (2-29/111 aa)
Target	Thymosin Alpha-1
Preservatives	0.01M TBS(pH7.4) with 1% rAlbumin, 0.03% Proclin300 and 50% Glycerol.
Form/Appearance	Liquid
Concentration	1mg/ml
Storage	Shipped at 4°C. Store at -20 °C for one year. Avoid repeated freeze/thaw cycles.
Note	For research use only
Isotype	IgG
Clonality	Polyclonal
MW	12 kDa
Uniprot ID	P06454
Dilution Range	ICC=1:100, IHC-P=1:100-500, IHC-F=1:100-500, IF=1:100-500, ELISA=1:5000-10000
Expiration Date	12 months from date of receipt.



Flow cytometric analysis of Rsc96 cell u...



Flow cytometric analysis of H9C2 cell us...