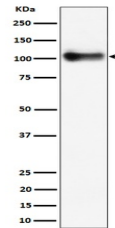


Product Datasheet

Thrombomodulin / CD141 Rabbit Monoclonal Antibody (orb1147489)

Description	Thrombomodulin / CD141 Rabbit Monoclonal Antibody
Species/Host	Rabbit
Reactivity	Mouse, Rat
Conjugation	Unconjugated
Tested Applications	FC, IHC, WB
Immunogen	A synthesized peptide derived from human Thrombomodulin / CD141
Form/Appearance	Liquid
Concentration	Actual concentration vary by lot. Use suggested dilution ratio to decide dilution procedure.
Storage	Maintain refrigerated at 2-8°C for up to 2 weeks. For long term storage store at -20°C in small aliquots to prevent freeze-thaw cycles.
Note	For research use only
Application notes	WB 1:500-1:2000IHC 1:50-1:200FC 1:50
Isotype	IgG
Clonality	Monoclonal
MW	105 kDa
Uniprot ID	P15306
Expiration Date	12 months from date of receipt.



Western blot analysis of Thrombomodulin ...