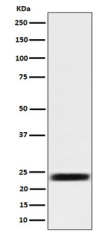


Product Datasheet

ARFRP1 / ARP Rabbit Monoclonal Antibody (orb1147460)

Description	ARFRP1 / ARP Rabbit Monoclonal Antibody
Species/Host	Rabbit
Reactivity	Human, Mouse, Rat
Conjugation	Unconjugated
Tested Applications	ICC, IF, WB
Immunogen	A synthesized peptide derived from human ARFRP1 / ARP
Form/Appearance	Liquid
Concentration	Actual concentration vary by lot. Use suggested dilution ratio to decide dilution procedure.
Storage	Maintain refrigerated at 2-8°C for up to 2 weeks. For long term storage store at -20°C in small aliquots to prevent freeze-thaw cycles.
Note	For research use only
Application notes	WB 1:500-1:2000 ICC/IF 1:50-1:200
Isotype	IgG
Clonality	Monoclonal
MW	23 kDa
Uniprot ID	Q13795
Expiration Date	12 months from date of receipt.



Western blot analysis of ARFRP1 / ARP ex...