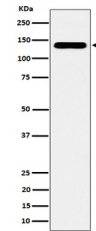


Product Datasheet

CYFIP1 Rabbit Monoclonal Antibody (orb1147392)

Description	CYFIP1 Rabbit Monoclonal Antibody
Species/Host	Rabbit
Reactivity	Human, Mouse, Rat
Conjugation	Unconjugated
Tested Applications	FC, ICC, IF, WB
Immunogen	A synthesized peptide derived from human CYFIP1
Form/Appearance	Liquid
Concentration	Actual concentration vary by lot. Use suggested dilution ratio to decide dilution procedure.
Storage	Maintain refrigerated at 2-8°C for up to 2 weeks. For long term storage store at -20°C in small aliquots to prevent freeze-thaw cycles.
Note	For research use only
Application notes	WB 1:500-1:2000 ICC/IF 1:50-1:200 FC 1:50. Restore with deionized water (or equivalent) for reconstitution volume of 1.0 mL
Isotype	IgG
Clonality	Monoclonal
MW	145 kDa
Uniprot ID	Q7L576
Sensitivity	> 5000 cells
Expiration Date	12 months from date of receipt.



Western blot analysis of CYFIP1 expressi...