
Product Datasheet

TGF beta Receptor 2 antibody (orb11471)

Description

TGF beta Receptor 2 antibody

Species/Host

Rabbit

Reactivity

Human, Mouse, Rat

Conjugation

Unconjugated

Tested Applications

ELISA, IHC-P, WB

Immunogen

KLH conjugated synthetic peptide derived from human TGF beta Receptor 2. Please contact us for the exact immunogen sequence. The peptide is available as orb374751.

Target

TGF beta Receptor 2

Form/Appearance

10 mM PBS, 0.02% sodium azide

Concentration

- 100 µg (in 200 µl): 0.5 mg/ml- 200 µg (in 400 µl): 0.5 mg/ml

Storage

Store at 4°C for up to two weeks. For long term storage, aliquot and store at -20°C, avoid freeze/thaw cycles.

Note

For research use only

Isotype

IgG

Clonality

Polyclonal

Purity

Polyclonal antibodies are purified by peptide affinity chromatography

MW

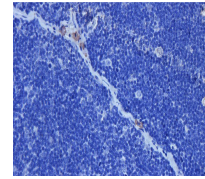
56 kDa

Uniprot ID
[P37173](#), [Q62312](#)
NCBI
[21](#), [001024847](#), [001020018](#), [11](#)
Entrez
[7048](#)
Dilution Range

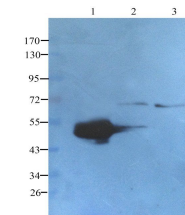
IHC-P: 1:100-600, WB: 1:100-2000

Expiration Date

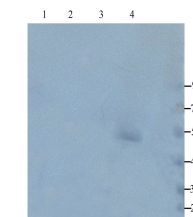
12 months from date of receipt.



Immunohistochemical staining of paraffin...



WB analysis of human lung cancer (lane 1...



Western blot analysis of rat pancreas (l...