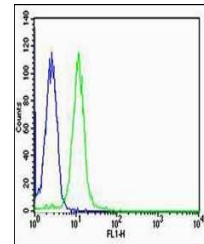


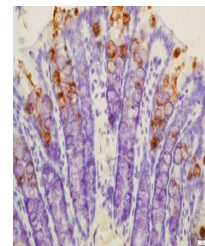
Product Datasheet

TFF3 antibody (orb11465)

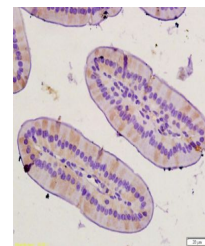
Description	TFF3 antibody
Species/Host	Rabbit
Reactivity	Human, Mouse, Rat
Conjugation	Unconjugated
Tested Applications	IHC-P, WB
Immunogen	KLH conjugated synthetic peptide derived from human TFF3 (51-80/94 aa)
Target	TFF3
Preservatives	0.01M TBS(pH7.4) with 1% rAlbumin, 0.03% Proclin300 and 50% Glycerol.
Form/Appearance	Liquid
Concentration	1mg/ml
Storage	Shipped at 4°C. Store at -20 °C for one year. Avoid repeated freeze/thaw cycles.
Note	For research use only
Isotype	IgG
Clonality	Polyclonal
MW	6.5 kDa
Uniprot ID	Q62395
Dilution Range	WB=1:500-2000, IHC-P=1:100-500
Expiration Date	12 months from date of receipt.



Flow cytometric analysis of HT-29 Cell u...



Immunohistochemical staining of rat colo...



Immunohistochemical staining of mouse sm...