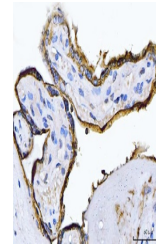


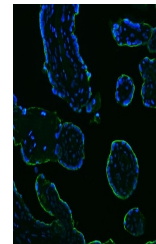
Product Datasheet

ALPP Antibody (monoclonal, 6C7G3) (orb1145867)

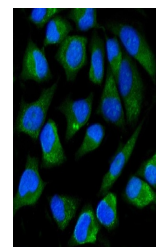
Description	ALPP Antibody (monoclonal, 6C7G3)
Species/Host	Mouse
Reactivity	Human
Conjugation	Unconjugated
Tested Applications	FC, ICC, IF, IHC, WB
Immunogen	A synthetic peptide corresponding to a sequence at the C-terminus of human ALPP (403-433aa KARDRKAYTVLLYGNGPGYVLKDGARPDVTE).
Form/Appearance	Lyophilized
Concentration	Adding 0.2 ml of distilled water will yield a concentration of 500 µg/ml.
Storage	Maintain refrigerated at 2-8°C for up to 2 weeks. For long term storage store at -20°C in small aliquots to prevent freeze-thaw cycles.
Note	For research use only
Application notes	Tested Species: In-house tested species with positive results. Other applications have not been tested. Optimal dilutions should be determined by end users. Adding 0.2 ml of distilled water will yield a concentration of 500 µg/ml.
Isotype	Mouse IgG2b
Clonality	Monoclonal
MW	70 kDa
Uniprot ID	P05187
Expiration Date	12 months from date of receipt.



IHC analysis of ALPP using anti-ALPP ant...



IF analysis of ALPP using anti-ALPP anti...



IF analysis of ALPP using anti-ALPP anti...