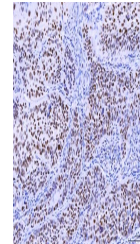


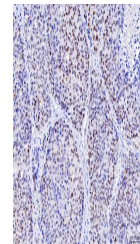
Product Datasheet

MSH2 Antibody (monoclonal, 6B4F7) (orb1145866)

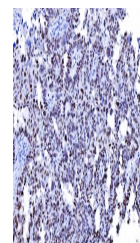
Description	MSH2 Antibody (monoclonal, 6B4F7)
Species/Host	Mouse
Reactivity	Human
Conjugation	Unconjugated
Tested Applications	ICC, IF, IHC, WB
Immunogen	E.coli-derived human MSH2 recombinant protein (Position: Q337-N583). Human MSH2 shares 94% and 93% amino acid (aa) sequence identity with mouse and rat MSH2, respectively.
Form/Appearance	Lyophilized
Concentration	Adding 0.2 ml of distilled water will yield a concentration of 500 µg/ml.
Storage	Maintain refrigerated at 2-8°C for up to 2 weeks. For long term storage store at -20°C in small aliquots to prevent freeze-thaw cycles.
Note	For research use only
Application notes	Tested Species: In-house tested species with positive results. Other applications have not been tested. Optimal dilutions should be determined by end users. Adding 0.2 ml of distilled water will yield a concentration of 500 µg/ml.
Isotype	Mouse IgG2b
Clonality	Monoclonal
MW	105 kDa
Uniprot ID	P43246
Expiration Date	12 months from date of receipt.



IHC analysis of MSH2 using anti-MSH2 ant...



IHC analysis of MSH2 using anti-MSH2 ant...



IHC analysis of MSH2 using anti-MSH2 ant...