
Product Datasheet

**SHP1/PTPN6 Antibody (monoclonal, 8H11B10)
(orb1145865)**

Description

SHP1/PTPN6 Antibody (monoclonal, 8H11B10)


Species/Host

Mouse

Reactivity

Human, Mouse, Rat

Conjugation

Unconjugated

Tested Applications

FC, ICC, IF, IHC, WB

Immunogen

E.coli-derived human SHP1/PTPN6 recombinant protein (Position: E67-K572).

IHC analysis of SHP1/PTPN6 using anti-SH...

Form/Appearance

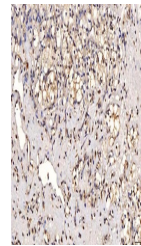
Lyophilized

Concentration

Adding 0.2 ml of distilled water will yield a concentration of 500 µg/ml.

Storage

Maintain refrigerated at 2-8°C for up to 2 weeks. For long term storage store at -20°C in small aliquots to prevent freeze-thaw cycles.


Note

For research use only

Application notes

Tested Species: In-house tested species with positive results. Other applications have not been tested. Optimal dilutions should be determined by end users. Adding 0.2 ml of distilled water will yield a concentration of 500 µg/ml.

IHC analysis of SHP1/PTPN6 using anti-SH...

Isotype

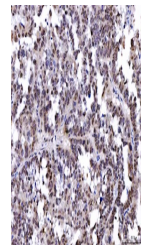
Mouse IgG2b

Clonality

Monoclonal

MW

68 kDa

Uniprot ID
[P29350](#)

Expiration Date

12 months from date of receipt.

IHC analysis of SHP1/PTPN6 using anti-SH...