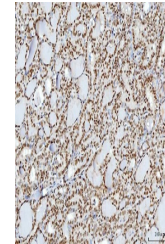


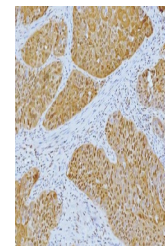
Product Datasheet

YY1 Antibody (monoclonal, 3F3E7) (orb1145860)

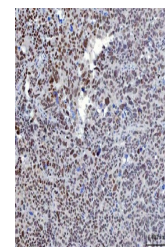
Description	YY1 Antibody (monoclonal, 3F3E7)
Species/Host	Mouse
Reactivity	Human, Mouse, Rat
Conjugation	Unconjugated
Tested Applications	FC, ICC, IF, IHC, WB
Immunogen	A synthetic peptide corresponding to a sequence in the middle region of human YY1 (206-241aa EQKQVQIKTLEGFSVTMWSSDEKKDIDHETVVEEQ), identical to the related mouse sequence.
Form/Appearance	Lyophilized
Concentration	Adding 0.2 ml of distilled water will yield a concentration of 500 µg/ml.
Storage	Maintain refrigerated at 2-8°C for up to 2 weeks. For long term storage store at -20°C in small aliquots to prevent freeze-thaw cycles.
Note	For research use only
Application notes	Tested Species: In-house tested species with positive results. Other applications have not been tested. Optimal dilutions should be determined by end users. Adding 0.2 ml of distilled water will yield a concentration of 500 µg/ml.
Isotype	Mouse IgG1
Clonality	Monoclonal
MW	65 kDa
Uniprot ID	P25490
Sensitivity	> 5000 cells
Expiration Date	12 months from date of receipt.



IHC analysis of YY1 using anti-YY1 antib...



IHC analysis of YY1 using anti-YY1 antib...



IHC analysis of YY1 using anti-YY1 antib...