
Product Datasheet

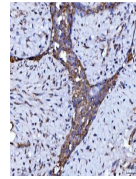
**Beclin 1 Antibody (monoclonal, 2D12A3)
(orb1145791)**

Description

Beclin 1 Antibody (monoclonal, 2D12A3)


Species/Host

Mouse


Reactivity

Human, Mouse, Rat

Conjugation

Unconjugated

Tested Applications

FC, ICC, IF, IHC, WB

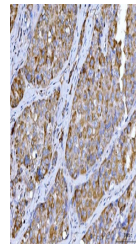
IHC analysis of Beclin 1 using anti-Beclin 1 antibody.

Immunogen

E.coli-derived human Beclin 1 recombinant protein (Position: M1-S354). Human Beclin 1 shares 97% amino acid (aa) sequence identity with both mouse and rat Beclin 1.

Form/Appearance

Lyophilized


Concentration

Adding 0.2 ml of distilled water will yield a concentration of 500 µg/ml.

Storage

Maintain refrigerated at 2-8°C for up to 2 weeks. For long term storage store at -20°C in small aliquots to prevent freeze-thaw cycles.

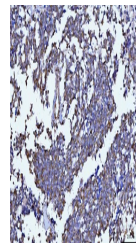
IHC analysis of Beclin 1 using anti-Beclin 1 antibody.

Note

For research use only

Application notes

Tested Species: In-house tested species with positive results. Other applications have not been tested. Optimal dilutions should be determined by end users. Adding 0.2 ml of distilled water will yield a concentration of 500 µg/ml.


Isotype

Mouse IgG1

Clonality

Monoclonal

MW

52-60 kDa

Uniprot ID
[Q14457](https://www.uniprot.org/uniprot/Q14457)

IHC analysis of Beclin 1 using anti-Beclin 1 antibody.

Expiration Date

12 months from date of receipt.