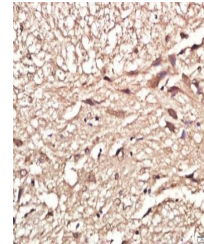


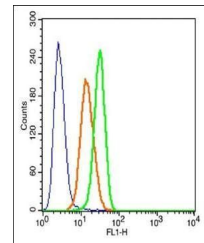
Product Datasheet

MAP2 antibody (orb11455)

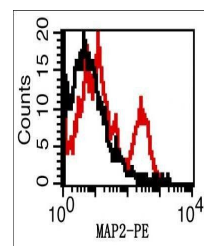
Description	MAP2 antibody
Species/Host	Rabbit
Reactivity	Human, Mouse, Rat
Conjugation	Unconjugated
Tested Applications	FC, IF, IHC-P, WB
Immunogen	KLH conjugated synthetic peptide derived from human MAP2 (1-120/1827 aa)
Target	MAP2
Preservatives	0.01M TBS(pH7.4) with 1% rAlbumin, 0.03% Proclin300 and 50% Glycerol.
Form/Appearance	Liquid
Concentration	1mg/ml
Storage	Shipped at 4°C. Store at -20 °C for one year. Avoid repeated freeze/thaw cycles.
Note	For research use only
Isotype	IgG
Clonality	Polyclonal
MW	70/201 kDa
Uniprot ID	P11137
Dilution Range	WB=1:500-2000, IHC-P=1:100-500, IF=1:200-800, Flow-Cyt=1ug/Test, IHC-F=1:100-500, ELISA=1:5000-10000
Expiration Date	12 months from date of receipt.



Immunohistochemical staining of rat spin...



Flow cytometric analysis of Rsc96 cell u...



Flow cytometric analysis of CK-8T cells ...