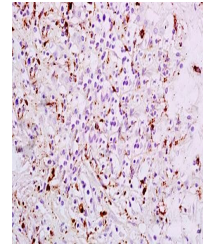


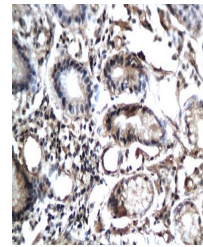
Product Datasheet

STAT6 (phospho-Thr641) antibody (orb11430)

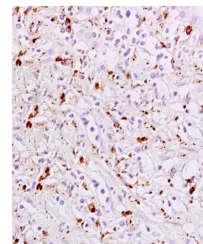
Description	STAT6 (phospho-Thr641) antibody
Species/Host	Rabbit
Reactivity	Human
Conjugation	Unconjugated
Tested Applications	ELISA, IF, IHC-Fr, IHC-P
Immunogen	KLH conjugated Synthesised phosphopeptide derived from human STAT6 around the phosphorylation site of Tyr641 (RG(p-Y)V)
Target	phospho-STAT6 (Tyr641)
Preservatives	0.01M TBS(pH7.4) with 1% rAlbumin, 0.03% Proclin300 and 50% Glycerol.
Form/Appearance	Liquid
Concentration	1mg/ml
Storage	Shipped at 4°C. Store at -20 °C for one year. Avoid repeated freeze/thaw cycles.
Note	For research use only
Isotype	IgG
Clonality	Polyclonal
MW	94 kDa
Uniprot ID	P42226
Dilution Range	IHC-P=1:100-500, IHC-F=1:100-500, IF=1:100-500, ELISA=1:5000-10000
Expiration Date	12 months from date of receipt.



Paraffin-embedded human liver carcinoma ...



IHC-P of human gastric cancer tissue (ST...



Immunohistochemical analysis of formalin...