

---

## Product Datasheet

### SOD2 antibody (orb11395)

**Description**

SOD2 antibody

**Species/Host**

Rabbit

**Reactivity**

Bovine, Canine, Equine, Human, Mouse, Porcine, Rat, Sheep

**Conjugation**

Unconjugated

**Tested Applications**

ELISA, IHC-P, WB

**Immunogen**

KLH conjugated synthetic peptide derived from human SOD2. Please contact us for the exact immunogen sequence. The peptide is available as orb374749.

**Target**

SOD2

**Form/Appearance**

10 mM PBS, 0.02% sodium azide

**Concentration**

- 100 µg (in 200 µl): 0.5 mg/ml- 200 µg (in 400 µl): 0.5 mg/ml

**Storage**

Store at 4°C for up to two weeks. For long term storage, aliquot and store at -20°C, avoid freeze/thaw cycles.

**Note**

For research use only

**Isotype**

IgG

**Clonality**

Polyclonal

**Purity**

Polyclonal antibodies are purified by peptide affinity chromatography

**MW**

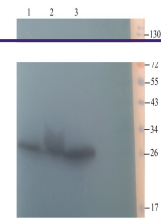
25 kDa

**Uniprot ID**
[P07895](#), [P09671](#), [P04179](#)
**NCBI**
[000636](#), [21](#), [000627](#)
**Entrez**
[6648](#)
**Dilution Range**

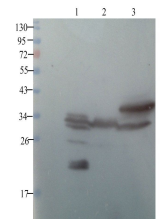
IHC-P: 1:200, WB: 1:200-1000

**Expiration Date**

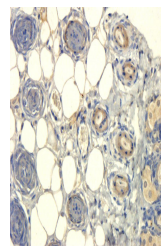
12 months from date of receipt.



Western blot analysis of rat heart (lane...



WB analysis of rat heart (lane 1), rat k...



IHC-P staining of mouse skin tissue usin...